



5615 Wills Boulevard
Pueblo, CO 81008
Phone: 719-546-5746 FAX: 719-546-5414

Region 2

DRP

Sheet Revisions

Date	Description	Initials

Sheet Revisions

Date	Description	Initials



4755 FORGE ROAD, SUITE 150
COLORADO SPRINGS, CO 80907
(719) 590-9194 / (719) 590-9111 Fax
www.f-w.com

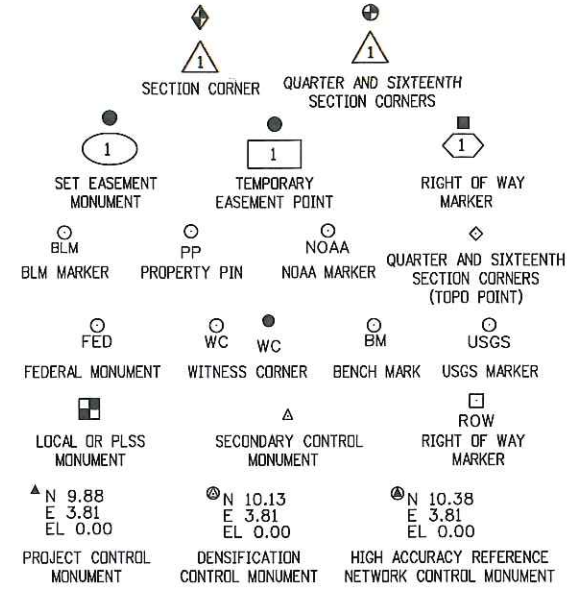
Project/Land Survey Control Diagram

Title Sheet			
Project Number: FBR R200-266			
Project Location: BRIDGE REPLACEMENT			
I-15-AD - 1-15-T US HIGHWAY 24			
Project Code:	Last Mod. Date	Subset	Sheet No.
23558	11-25-2020	3.01 to 3.05	3.01

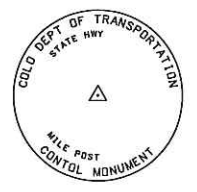
DEPARTMENT OF TRANSPORTATION STATE OF COLORADO

PROJECT/LAND SURVEY CONTROL DIAGRAM
State Highway 24
Section 6
Township 13 South, Range 70 West
of the 6th Principal Meridian
County of Teller

SHEET NO.	INDEX OF SHEETS
3.01	(1) Title Sheet
3.02	(1) Coordinate Tables
3.03 - 3.05	(3) Plan Sheets
(5) Total Sheets	



Note: For a complete listing of symbolology used within this set of plans, please refer to the M-100-1 Standard Symbols of the Colorado Department of Transportation M&S Standards Publication. Existing features are shown as screened weight (gray scale). Proposed or new features are shown as full weight without screening.

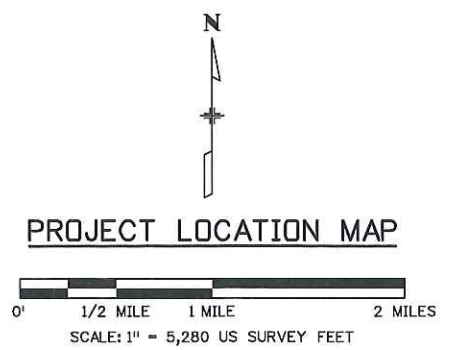
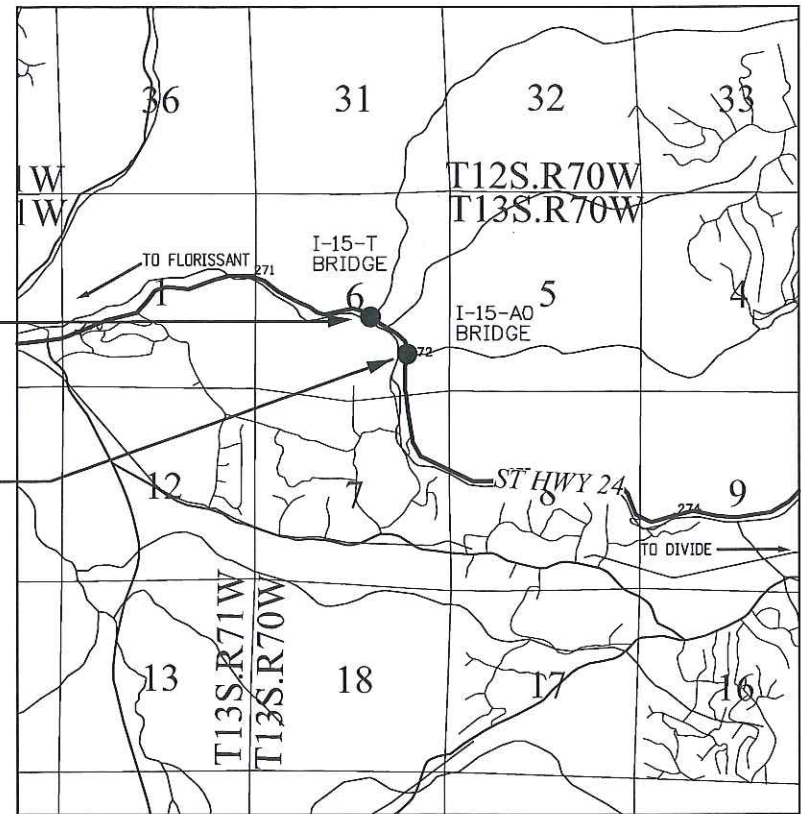


Typical Control Monument Cap
Not to Scale

▲ CM-MP - Control Point Monuments set by CDOT. They are CDOT Type II monuments, a 3/4" dia. aluminum control monument cap (as shown) on a 3' x 3/4" dia. aluminum security rod on a 3' x 3/4" dia. smooth aluminum rod.

General Notes:

1. This Project/Land Survey Control Diagram is not a boundary survey of the adjoining property and is prepared for the Colorado Department of Transportation purposes only.
2. This plan set is subject to change and may not be the most current set. It is the user's responsibility to verify with CDOT that this set is the most current. The information contained on the attached drawing is not valid unless this copy bears an original signature of the Professional Land Surveyor hereon named.
3. Refer to the M-629-1 Survey Monuments of the Standard Plans found in The Colorado Department of Transportation, M & S Standards for typical survey monument descriptions.



Basis of Bearings: Bearings used in the calculations of coordinates are based on a grid bearing of S80°50'50"E from CM-MP 2713 to CM-MP 2716. Both monuments are CDOT Type II, marked appropriately for their milepost location and control position. The survey data was obtained from a Global Positioning System (GPS) survey in September of 2020 and is based on the National Spatial Reference System.

Basis of Elevations: Project elevations are based on a GPS elevation of 8433.33 on C.P. 2713, a standard CDOT Type II monument. All project control points were then leveled through holding the elevation listed above.

COORDINATE DATUM: Project coordinates are modified Colorado State Plane Central Zone NAD '83/(11) coordinates. The combined elevation/scale factor used to modify the coordinates from state plane to project coordinates is 1.0004617479. The resulting project coordinates are truncated by 1,000,000 ft in the Northing and 2,000,000 ft in the Easting after converting from state plane coordinates to project coordinates.

Project Coordinates Northing US Survey Feet = [(State Plane Coordinate Northing(m) * 1.0004617479) * (3937ft/1200m)] - 1,000,000ft.
Project Coordinates Easting US Survey Feet = (State Plane Coordinate Easting(m) * 1.0004617479) * (3937ft/1200m) - 2,000,000ft.

NOTICE: According to Colorado law you must commence any legal action based upon any defect in this survey within three years after you first discover such defect. In no event may any action based upon any defect in this survey be commenced more than ten years from the date of the certification shown hereon.

SURVEYOR STATEMENT (PROJECT/LAND SURVEY CONTROL DIAGRAM)

I, Lorelei A. Ward, a professional land surveyor licensed in the State of Colorado, do hereby state to the Colorado Department of Transportation that based upon my knowledge, information and belief, research, calculations and evaluation of the survey evidence were performed and this Project/Land Survey Control Diagram prepared under my responsible charge in accordance with applicable standards of practice defined by Colorado Department of Transportation publications. This statement is not a guaranty or warranty, either expressed or implied.

PLS No. 34982

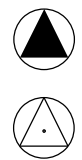


12/11/2020 lward 3:34:29 PM J:\2020\02000567.00 - CDOT Bridge Bundles\23558 ROW_Survey\115AD - US 24 MP 271.9 Drawings\23558_SURV_I-15-AD-I-15-T-Title Sheet.dgn

Sheet Revisions		
Date	Description	Initials
		XXX

Sheet Revisions		
Date	Description	Initials

Project Control Diagram			
Coordinate Tables			
Project Number: FBR R200-266			
Project Location: BRIDGE REPLACEMENT			
I-15-AD - I-15-T - US HIGHWAY 24			
Project Code:	Last Mod. Date	Subset	Sheet No.
23558	11-30-20	3.02 of 3.05	3.02



GEODETTIC COORDINATE TABLE									
Point No.	Geodetic Coordinates NAD-83(2011)		Elip Height (NAVD88)	Ortho Height (NAVD88)	Mapping Angle	Grid Scale Factor	NAD 83(2011) Zone 0502		Description
	Latitude(N)	Longitude(W)					SP Northing(m)	SP Easting(m)	
2713	38°56'53.64160"	-105°15'48.44746"	8,386.86	8,433.33	0°08'57.1"	0.999538554	1,406,129.16	3,067,271.76	CDOT TYPE II MONUMENT
2716	38°56'50.87311"	-105°15'26.80642"	8,393.69	8,440.18	0°09'10.7"	0.999538264	1,405,853.59	3,068,982.12	CDOT TYPE II MONUMENT
2718	38°56'43.76719"	-105°15'16.29484"	8,436.73	8,483.24	0°09'17.3"	0.999536299	1,405,136.95	3,069,814.48	CDOT TYPE II MONUMENT
2721	38°56'34.90184"	-105°15'18.43722"	8,473.56	8,520.07	0°09'16.0"	0.999534657	1,404,239.62	3,069,647.64	CDOT TYPE II MONUMENT
2723	38°56'18.53956"	-105°15'14.85543"	8,511.55	8,558.09	0°09'18.3"	0.999533061	1,402,585.08	3,069,935.10	CDOT TYPE II MONUMENT
27175	38°56'47.10327"	-105°15'19.43856"	8,417.30	8,463.80	0°09'15.4"	0.999537184	1,405,473.77	3,069,565.21	CDOT TYPE II MONUMENT
Q173	38°57'16.82035"	-105°19'22.04510"	8,027.28	8,073.53	0°06'42.4"	0.999555444	1,408,435.63	3,050,393.22	BM SET IN CONCRETE POST
WADE	38°55'59.04264"	-105°13'18.93945"	8,757.84	8,804.52	0°10'31.4"	0.999521565	1,400,639.08	3,079,099.61	HORIZONTAL CONTROL DISK SET IN ROCK



PROJECT COORDINATE TABLE				
Point No.	Project Coordinates		Elev(ft) (NAVD88)	Description
	Northing(ft)	Easting(ft)		
2713	406,778.44	1,068,688.07	8,433.33	CDOT TYPE II MONUMENT
2716	406,502.74	1,070,399.22	8,440.18	CDOT TYPE II MONUMENT
2718	405,785.76	1,071,231.96	8,483.24	CDOT TYPE II MONUMENT
2721	404,888.02	1,071,065.04	8,520.07	CDOT TYPE II MONUMENT
2723	403,232.72	1,071,352.63	8,558.09	CDOT TYPE II MONUMENT
27175	406,122.75	1,070,982.57	8,463.80	CDOT TYPE II MONUMENT
Q173	409,085.98	1,051,801.73	8,073.53	BM SET IN CONCRETE POST
WADE	401,285.82	1,080,521.38	8,804.52	HORIZONTAL CONTROL DISK SET IN ROCK

○ PP
 □ ROW

FOUND BOUNDARY MONUMENT COORDINATE TABLE - I-15-AO - I-15-T			
Point No.	Northing(ft)	Easting(ft)	Description
5301	406,603.90	1,070,463.27	FOUND 3.25" BRASS CAP IN CONCRETE STATE HWY ROW MARKER 1045+00
5302	406,964.08	1,069,645.15	FOUND YPC ON #5 REBAR MARKED ALESSI PLS 30130
5303	406,877.91	1,069,267.67	FND 3.25" BRASS CAP IN CONC STATE HWY ROW MARKER STA 1030+85.6
5304	407,056.67	1,068,380.88	FND 3.25" BRASS CAP IN CONC STATE HWY ROW MARKER STA 1021+00
5305	407,264.80	1,067,975.49	FND #4 REBAR WITH BROKEN ILLEG YPC
5306	407,383.46	1,067,744.80	FND 3.25" BRASS CAP IN CONC STATE HWY ROW MARKER STA 1013+83.4
5307	406,949.03	1,068,325.93	FOUND 3.25" BRASS CAP IN CONCRETE STATE HWY ROW MARKER 1021+00
5308	406,931.52	1,068,316.77	FOUND 3.25" BRASS CAP IN CONCRETE STATE HWY ROW MARKER 1021+00
5309	406,850.59	1,068,515.63	FOUND #4 REBAR
5310	406,844.71	1,069,642.66	FOUND 1.5" ALUM CAP PLS 38118
5311	407,266.33	1,068,336.63	FOUND 2.5" ALUM CAP ON #6 REBAR MARKED ALLES I PLS 30130
147035	402,813.62	1,071,777.03	FND BRASS ROW MARKER IN CONCRETE PWA158E 1088+53BK 1088+58.9AH
148498	404,353.28	1,071,223.45	FND BRASS ROW MARKER IN CONCRETE 158F 1070+98
148501	404,340.20	1,071,225.96	LS 27931 ALUM 1.25 CAP
148785	406,337.44	1,070,882.92	PWA 158F STA1048+96 LEANING
148937	403,258.32	1,071,283.19	FND BRASS ROW MARKER IN CONCRETE RBR PWA 158F STA 1081+86.1
148972	402,657.29	1,071,698.74	FND BRASS ROW MARKER IN CONCRETE PWA 158F 1088+53BK 1088+58.9AH
149115	404,350.35	1,071,102.61	FND BRASS ROW MARKER IN CONCRETE PWA 158F 1070+78
149518	405,342.86	1,071,066.51	FND BRASS ROW MARKER IN CONCRETE PWA 158F STA 1061+00
149576	405,347.51	1,071,042.09	FND BRASS ROW MARKER IN CONCRETE PWA 158F 1061+00
149849	405,944.98	1,071,213.28	LS 27931 WC 7/4 1.25 ALUM CAP
150017	405,322.29	1,070,927.44	LS 2372 RPC
150075	405,805.68	1,071,006.78	CPLS 38118 1.25 ALUM CAP
150281	406,486.20	1,070,392.41	LAYING ON SURFACE
150388	405,981.43	1,072,127.24	FND ALUM CAP "1/ 2 3 LS 27931"

12/11/2020 3:50:56 PM J:\2020\0200567.00 - CDDT Bridge Bundles\23558\ROW_Survey\115AD - US 24 MP 271.9\Drawings\23558_SURV_15-AD-I-15-T_SURV_PCD-Coord.dgn



5615 Wills Boulevard
Pueblo, CO 81008
Phone: 719-546-5746 FAX: 719-546-5414

Region 2

DRP

Sheet Revisions

Date	Description	Initials

Sheet Revisions

Date	Description	Initials



4755 FORGE ROAD, SUITE 150
COLORADO SPRINGS, CO 80907
(719) 590-9194 / (719) 590-9111 Fax
www.f-w.com

Project/Land Survey Control Diagram

Plan Sheet			
Project Number: FBR R200-266			
Project Location: BRIDGE REPLACEMENT			
I-15-AD - I-15-T - US HIGHWAY 24			
Project Code:	Last Mod. Date	Subset	Sheet No.
23558	12-10-2020	3.03 to 3.05	3.03

T-13-S R-70-W
6TH PM

NW 1/4 SECTION 6

NE 1/4 SECTION 6

SW 1/4 SECTION 6

SE 1/4 SECTION 6

TO FLORISSANT

MATCH LINE

MATCH LINE

APPROXIMATE 1/4 SECTION LINE

APPROXIMATE 1/4 SECTION LINE

US HWY 24

TRACT 1R
BILLUP AND BARNES SUB

TRACT 2R
BILLUP AND BARNES SUB

TRACT 10R
BILLUP AND BARNES SUB

TRACT 11
BILLUP AND BARNES SUB

TRACT 12
BILLUP AND BARNES SUB

TRACT 7B

TRACT 7

PRIVATE DRIVE

PRIVATE DRIVE

5307 FOUND 3.25" BRASS CAP IN CONCRETE STATE HWY ROW MARKER STA 1021+00

5308 FOUND 3.25" BRASS CAP IN CONCRETE STATE HWY ROW MARKER STA 1021+00

5309 FOUND #4 REBAR PP

5311 FOUND 2.5" ALUM CAP ON #6 REBAR MARKED ALESSI PLS 30130

5304 FND 3.25" BRASS CAP IN CONC STATE HWY ROW MARKER STA 1021+00

5305 FND #4 REBAR WITH BROKEN ILLEG YPC

5306 FND 3.25" BRASS CAP IN CONC STATE HWY ROW MARKER STA 1013+83.4

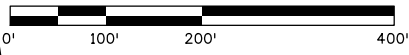
5302 FOUND YPC ON #5 REBAR MARKED ALESSI PLS 30130

5303 FND 3.25" BRASS CAP IN CONC STATE HWY ROW MARKER STA 1030+85.6

5310 FOUND 1.5" ALUM CAP PLS 38118

2713 SET CDDT TYPE II MONUMENT
N 406,778.44
E 1,068,688.06
EL 8,433.33

NOTES:
ALL SECTION LINE LOCATIONS ARE APPROXIMATE.
THE OWNERSHIP LINES ARE FROM THE TELLER COUNTY ASSESSOR'S INFORMATION.



12/15/2020 11:37:03 AM J:\2020\0200567.00 - CDDT Bridge Bundles\235568\ROW_Survey\115AD - US 24 MP 271.9\Drawings\235568_SURV_1-15-AD-1-15-T_FCD-Plan01_200scale.dgn



5615 Wills Boulevard
Pueblo, CO 81008
Phone: 719-546-5746 FAX: 719-546-5414

Region 2

DRP

Sheet Revisions

Date	Description	Initials

Sheet Revisions

Date	Description	Initials

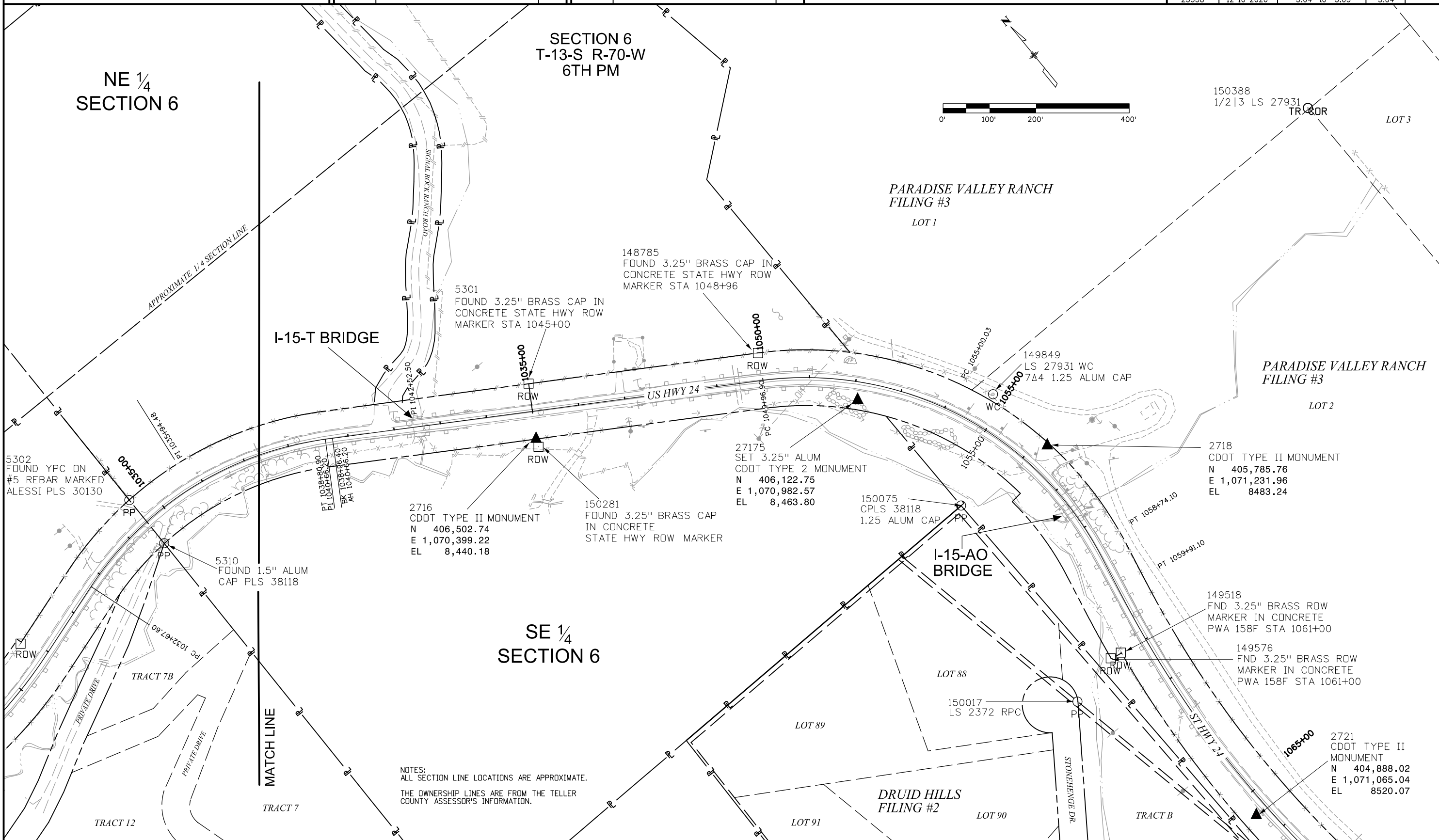
4755 FORGE ROAD, SUITE 150
COLORADO SPRINGS, CO 80907
(719) 590-9194 / (719) 590-9111 Fax
www.f-w.com

Project/Land Survey Control Diagram

Plan Sheet

Project Number: FBR R200-266			
Project Location: BRIDGE REPLACEMENT			
I-15-AD - I-15-T - US HIGHWAY 24			
Project Code:	Last Mod. Date	Subset	Sheet No.
23558	12-10-2020	3.04 to 3.05	3.04

12/15/2020 11:50:48 AM J:\2020\0200567.00 - CDOT Bridge Bundles\235568\Survey\I15AD - US 24 MP 271.9\Drawings\235568_SURV_I15-AD-1-15-T_PCD-Plan02_200scale.dgn

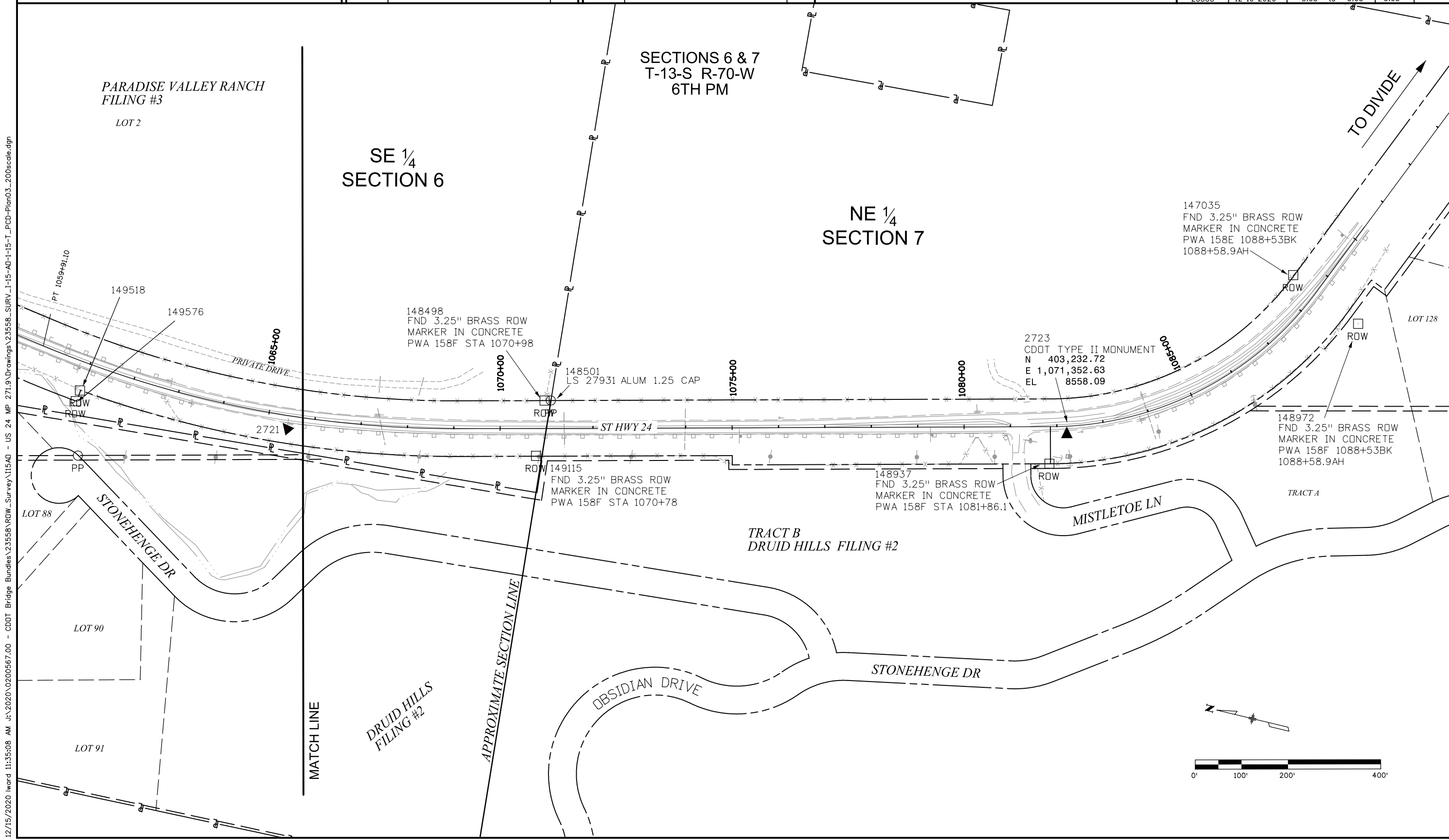


NOTES:
ALL SECTION LINE LOCATIONS ARE APPROXIMATE.
THE OWNERSHIP LINES ARE FROM THE TELLER COUNTY ASSESSOR'S INFORMATION.

Sheet Revisions		
Date	Description	Initials

Sheet Revisions		
Date	Description	Initials

Project/Land Survey Control Diagram				
Plan Sheet				
Project Number: FBR R200-266				
Project Location: BRIDGE REPLACEMENT				
I-15-AD - I-15-T - US HIGHWAY 24				
Project Code	Last Mod. Date	Subset	Sheet No.	
23558	12-10-2020	3.05 to 3.05	3.05	3.05



12/15/2020 11:35:08 AM J:\2020\0200567.00 - CDOT Bridge Bundles\23558\ROW_Survey\115AD - US 24 MP 271.9\Drawings\23558\SURV_I-15-AD-1-15-T_PCD-Plan03_200scale.dgn

